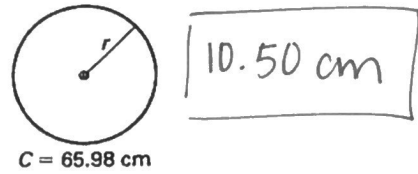
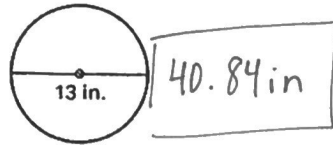
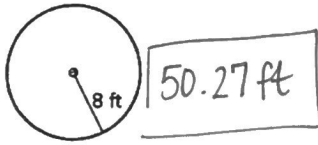


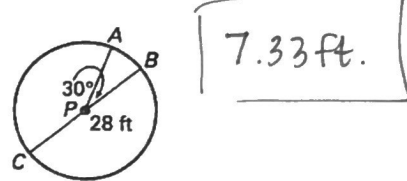
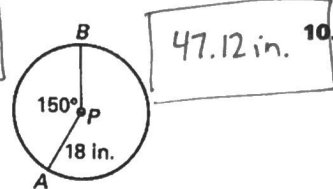
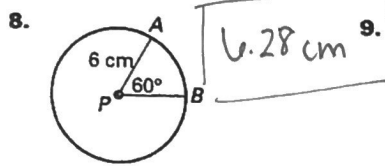
1. Find the circumference.      2. Find the circumference.      3. Find the radius.



Find the indicated measure.

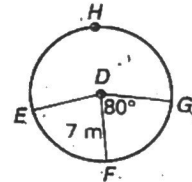
4. The exact radius of a circle with circumference 42 meters  $\frac{21}{\pi}$  m.  
 5. The exact diameter of a circle with circumference 39 centimeters  $\frac{39}{\pi}$  m.  
 6. The exact circumference of a circle with diameter 15 inches  $15\pi$  in.  
 7. The exact circumference of a circle with radius 27 feet  $54\pi$  ft.

Find the length of  $\widehat{AB}$ .

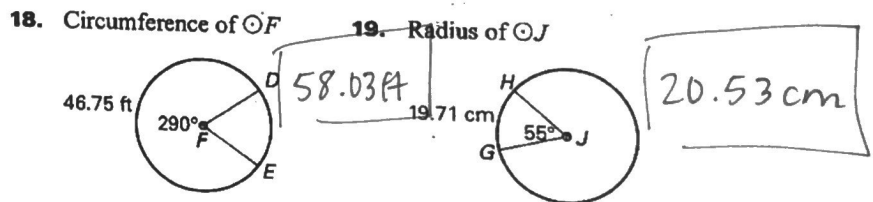
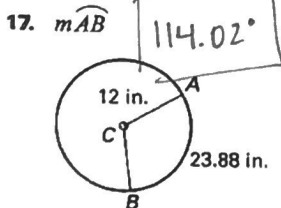


In  $\odot D$  shown below,  $\angle EDF \cong \angle FDG$ . Find the indicated measure.

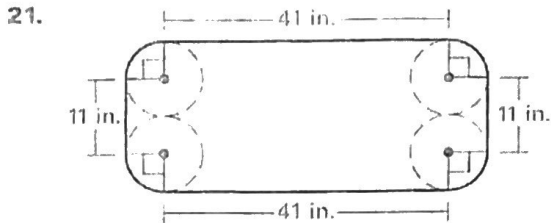
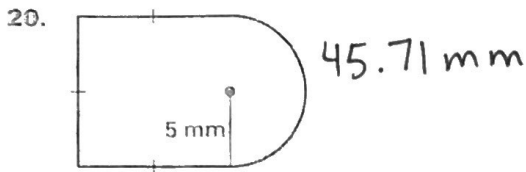
11.  $m\widehat{EFG}$   $160^\circ$       12.  $m\widehat{EHG}$   $200^\circ$   
 13. Length of  $\widehat{EFG}$   $19.55$  m.      14. Length of  $\widehat{EHG}$   $24.43$  m.  
 15.  $m\widehat{EHF}$   $280^\circ$       16. Length of  $\widehat{FEG}$   $34.21$  m



Find the indicated measure.



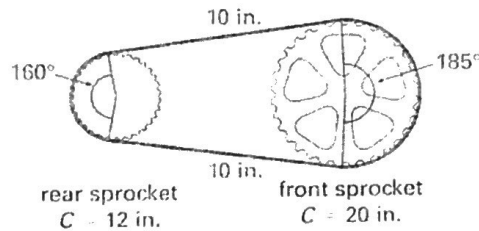
Find the perimeter of the region.



22. In the table below,  $\widehat{AB}$  refers to the arc of a circle. Complete the table.

Radius	4	11	9.79	4.81	9.5	10.7
$m\widehat{AB}$	$30^\circ$	43.02	$105^\circ$	$75^\circ$	88.24	$270^\circ$
Length of $\widehat{AB}$	?	8.26	17.94	6.3	14.63	50.42

23. **Bicycles** The chain of a bicycle travels along the front and rear sprockets, as shown. The circumference of each sprocket is given.



- a. About how long is the chain? 35.61 in
- b. On a chain, the teeth are spaced in  $\frac{1}{2}$  inch intervals. About how many teeth are there on this chain? 71 teeth

24. **Enclosing a Garden** You have planted a circular garden with its center at one of the corners of your garage, as shown. You want to fence in your garden. About how much fencing do you need?

